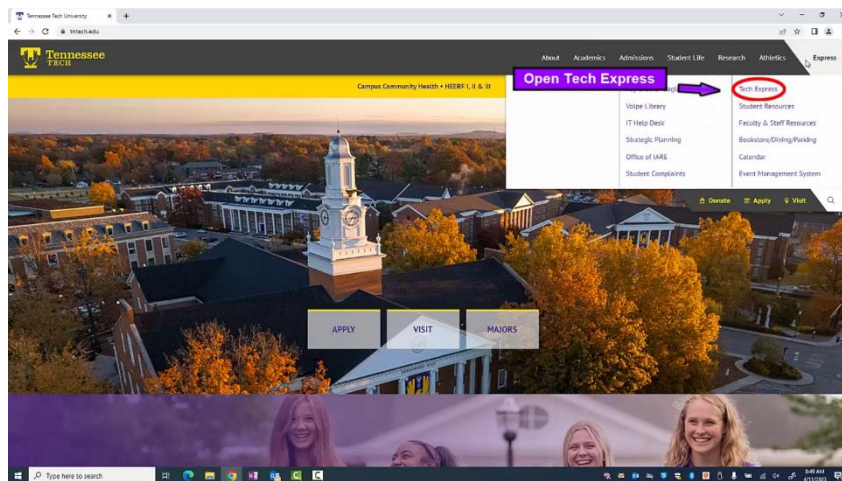


How to Select a Meal Plan From Your Tech Express Account

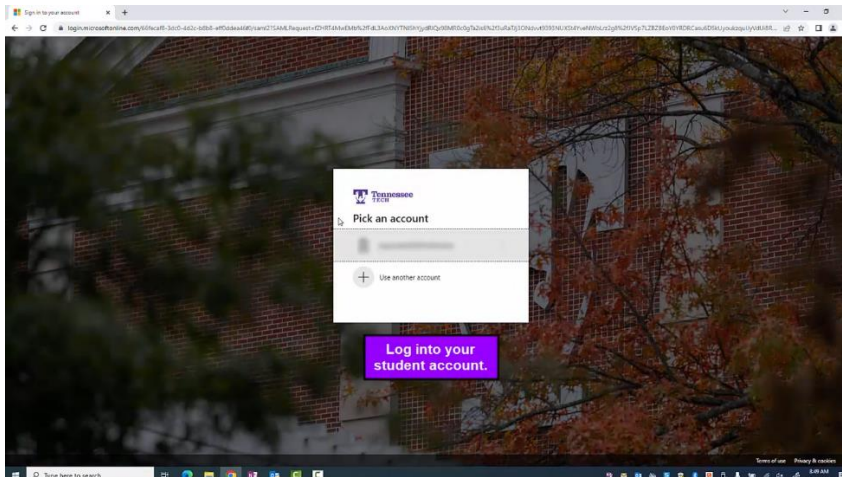
Please Note

Accessing meal plan selection from the message box at the top of tech express is only available during the 1st week of pre-registration and two weeks before classes begin. Please see the Tech Express Registration Card- Meal Plan Selection item if you would like to select a meal plan outside of these times.

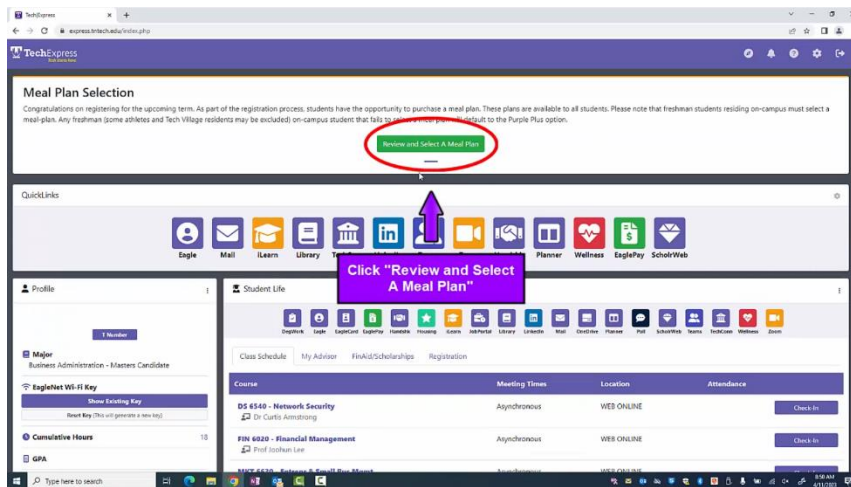
1. Visit the Tennessee Tech Website Homepage at <https://www.tntech.edu>
2. Move your cursor to the express tab in the top right corner and select “Tech Express”.



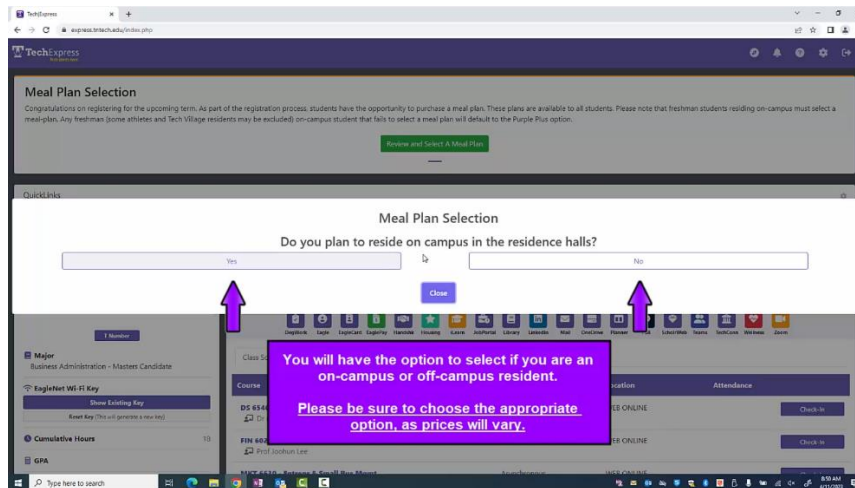
3. Login to Tech Express using your Username and Password Note: Username is the first portion of your student email (jasmith42).



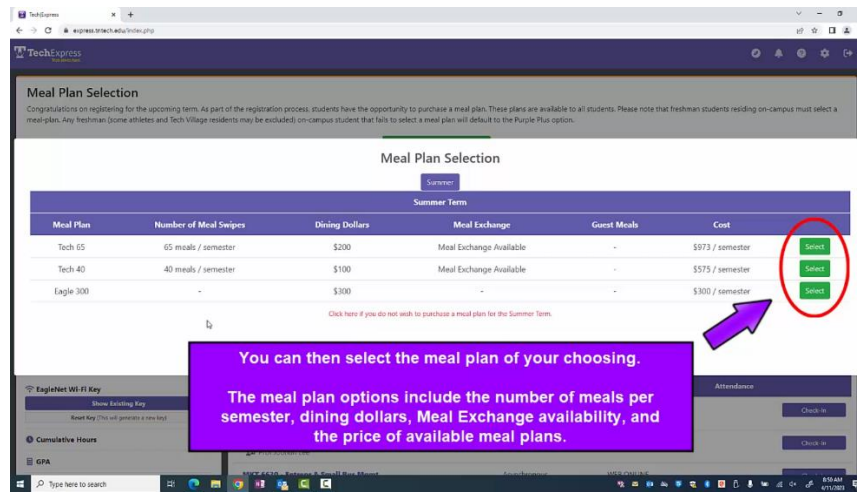
4. If you have already registered for classes there will be a box at the top of your screen with the option to “Review and Select A Meal Plan”. Please click this box.



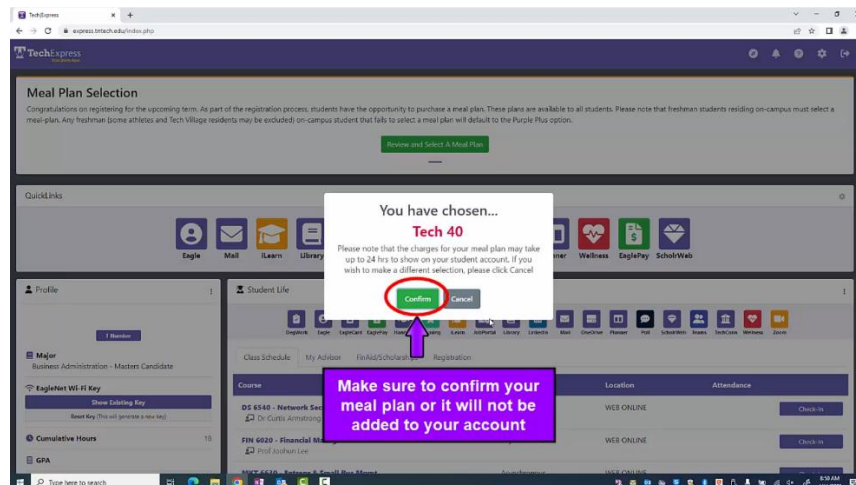
5. You will have the option to select if you are an on-campus or off-campus resident. Please be sure to choose the appropriate option, as prices will vary.



6. You can then select the meal plan of your choosing. The meal plan options include the number of meals per semester, dining dollars, Meal Exchange availability, and the price of available meal plans.



7. Make sure to confirm your meal plan or it will not be added to your account.



8. Once you have confirmed your meal plan selection, it will be added to your account, and charges will appear within 24 hours. If you have any other questions, don't hesitate to contact us at the Tennessee Tech Bursar's Office via email (Bursar@tntech.edu) or phone (931)-372-3311.